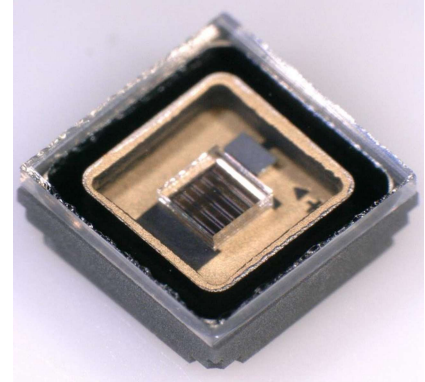
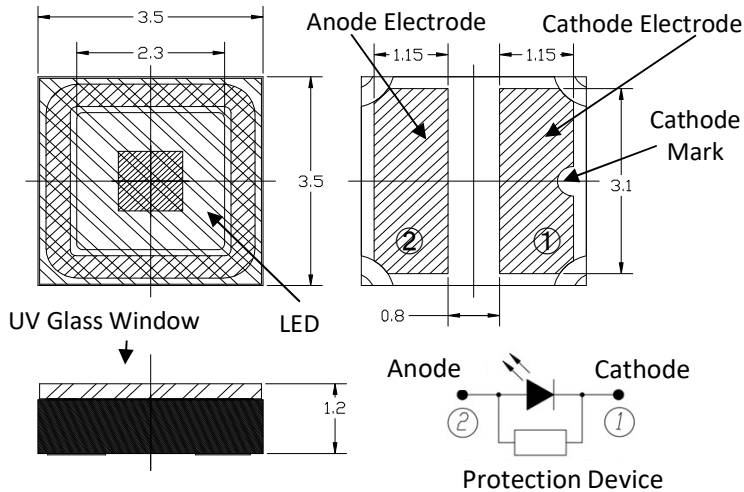


MODEL 325-FL-02-U05**3.5 x 3.5mm Metal Sealed SMD Flat Top Type****Mechanical Specifications and Materials (Unit: mm)****Typical Optical-Electrical Characteristics**(I_F=350mA, T_a=25°C)

Item	Symbol	Unit	325-FL-02-U05		
			Min	Typ	Max
Peak Wavelength(*)	λ_p	nm	320	325	330
Radiant Flux(**)	P _o	mW	30	47	-
Full Width at Half Maximum	$\Delta\lambda$	nm	-	15	20
Forward voltage	V _F	V	-	5.0	-
Viewing Half Angle	2 $\theta_{1/2}$	deg.	-	120	-

(*)Peak Wavelength Measurement tolerance is ± 3 nm.(**)Radiant Flux Measurement tolerance is $\pm 10\%$.

(***)Junction-ambient

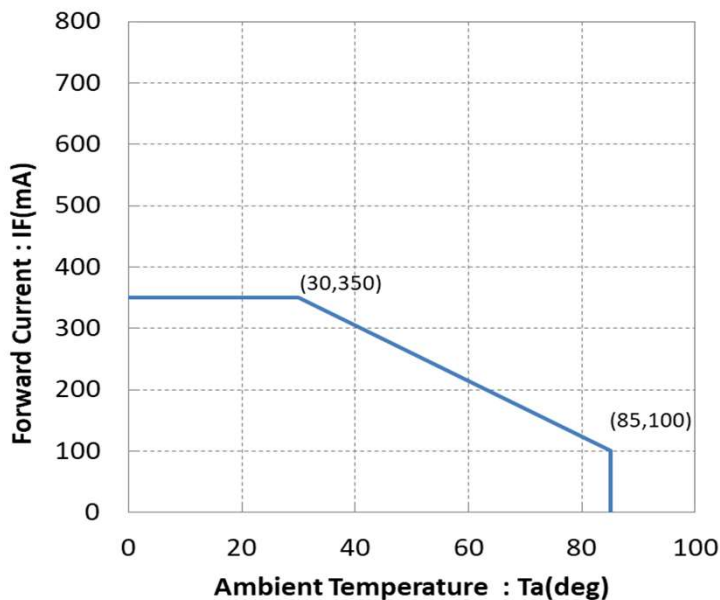
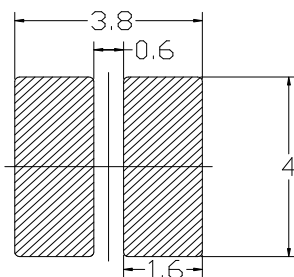
Specification and dimension are subject to change for improvement without notice.

Binning is available.

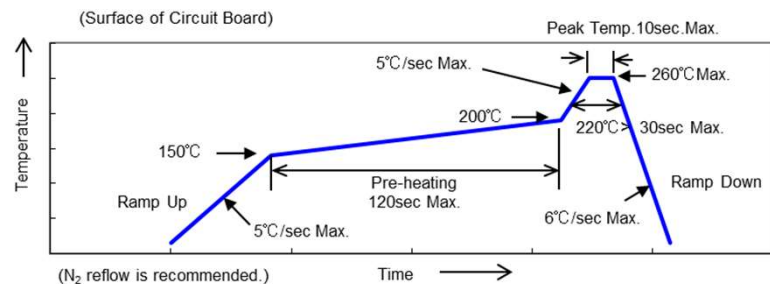
	WARNING		
<ul style="list-style-type: none"> LEDs emit very strong UV radiation. Do not look at the LED light with the naked eye or irradiate the skin. UV radiation can harm your eyes and skin. To prevent UV radiation exposure, wear protective eyewear and protective equipment. If LEDs are embedded in devices, please indicate warning labels against the UV light LED used. Keep out of reach of children. 			

MODEL 325-FL-02-U05**3.5 x 3.5mm Metal Sealed SMD Flat Top Type****Absolute Maximum Ratings**

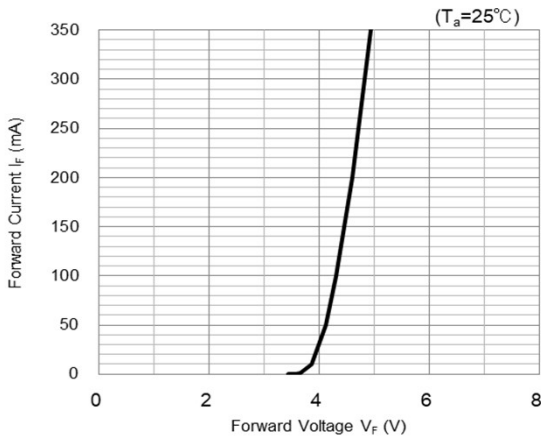
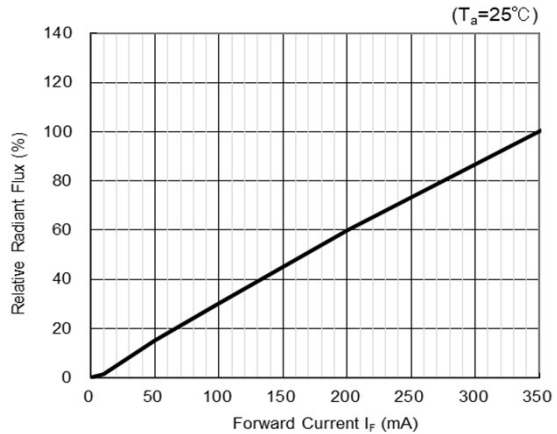
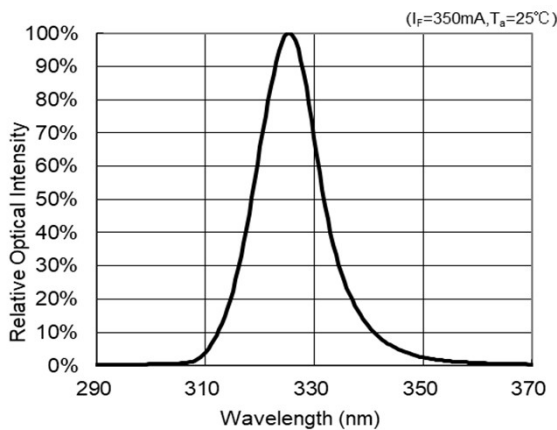
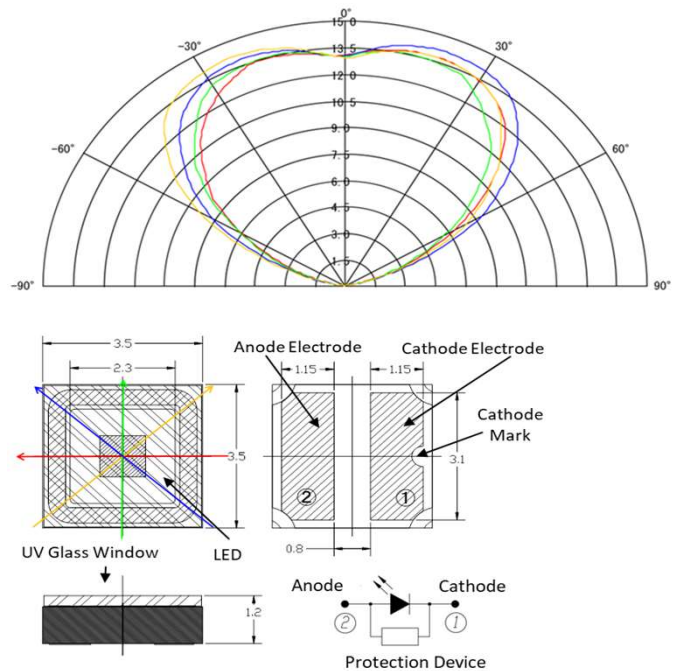
Item	Symbol	Unit	Value
Forward Current	I_F	mA	350
Junction Temperature	T_J	°C	90
Operating Temperature	T_{OPR}	°C	-30 ~ +85
Storage Temperature	T_{STR}	°C	-40 ~ +85 (No condensation)

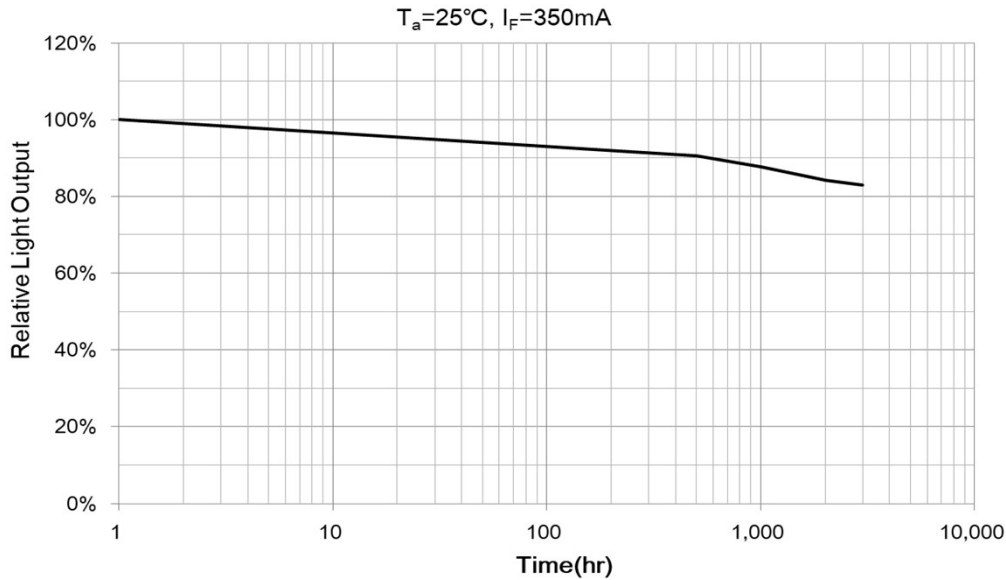
Derating Curve**Recommended solder pad**

Unit : mm

Reflow soldering profile

This soldering profile is according to JEDEC-J-STD-020D.

DOWA**DoUVLEDs SMD****DOWA SUPERB UV LED SOLUTIONS****MODEL 325-FL-02-U05****3.5 x 3.5mm Metal Sealed SMD Flat Top Type****Reference Data(1)****Forward Voltage vs Forward Current****Forward Current vs Radiant Flux****Spectrum****Radiation Pattern**

MODEL 325-FL-02-U05**3.5 x 3.5mm Metal Sealed SMD Flat Top Type****Reference Data(2)****Life Expectancy Data**

These data as on the page 1 to 4 were determined with Al-substrate on a heat sink and fan.