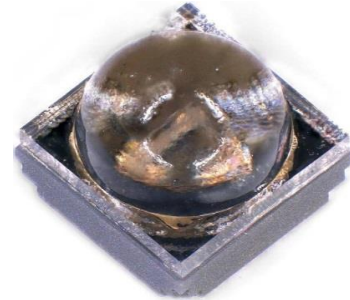
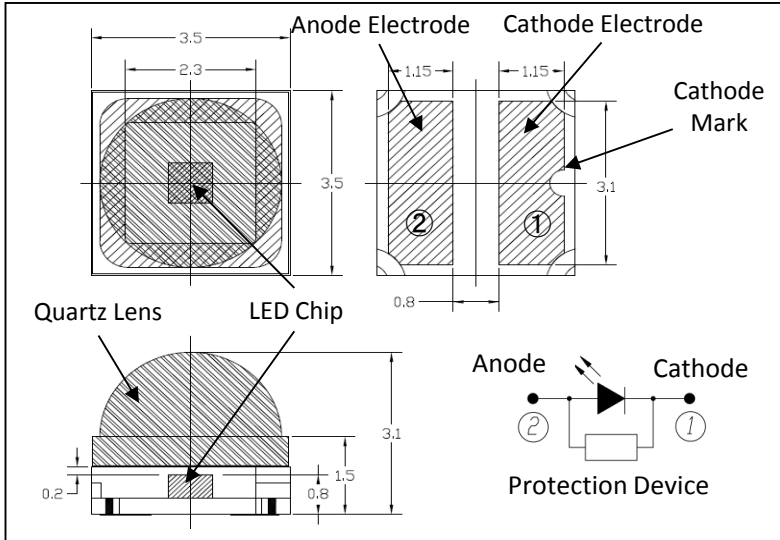


MODEL xxx-FL-01-G01 series

3.5 x 3.5mm Metal Sealed SMD Hemispherical Lens Type

Mechanical Specifications and Materials (Unit: mm)



Product ID

275nm: 275-FL-01-G01

280nm: 280-FL-01-G01

308nm: 308-FL-01-G01

325nm: 325-FL-01-G01

340nm: 340-FL-01-G01

Typical Optical-Electrical Characteristics

I_F=350mA, T_a=25°C

Item	Symbol	Unit	275-FL-01-G01			280-FL-01-G01			308-FL-01-G01			325-FL-01-G01			340-FL-01-G01		
			Min	Typ	Max	Min	Typ	Max	Min	Typ	Max	Min	Typ	Max	Min	Typ	Max
Peak Wavelength(*)	λ_p	nm	270	275	280	275	280	285	303	308	313	320	325	330	335	340	345
Radiant Flux(**)	P _o	mW	18	26	35	18	26	35	22	35	44	22	32	40	22	32	40
Full Width at Half Maximum	$\Delta\lambda$	nm	-	11	-	-	11	-	-	14	-	-	12	-	-	10	-
Forward voltage	V _F	V	-	5.4	-	-	5.4	-	-	5.5	-	-	5.2	-	-	5.0	-
Viewing Half Angle	2 $\theta_{1/2}$	deg.	-	35	-	-	35	-	-	35	-	-	35	-	-	35	-

I_F=600mA, T_a=25°C

Item	Symbol	Unit	275-FL-01-G01			280-FL-01-G01			308-FL-01-G01			325-FL-01-G01			340-FL-01-G01		
			Min	Typ	Max	Min	Typ	Max	Min	Typ	Max	Min	Typ	Max	Min	Typ	Max
Peak Wavelength(*)	λ_p	nm	-	(275)	-	-	(280)	-	-	(308)	-	-	(325)	-	-	(340)	-
Radiant Flux(**)	P _o	mW	-	40	-	-	40	-	-	53	-	-	49	-	-	53	-
Full Width at Half Maximum	$\Delta\lambda$	nm	-	(12)	-	-	(12)	-	-	(15)	-	-	(12)	-	-	(10)	-
Forward voltage	V _F	V	-	6.0	-	-	6.0	-	-	6.0	-	-	5.5	-	-	5.2	-
Viewing Half Angle	2 $\theta_{1/2}$	deg.	-	35	-	-	35	-	-	35	-	-	35	-	-	35	-

(*)Peak Wavelength Measurement tolerance is ±3nm.

(**)Radiant Flux Measurement tolerance is ±10%.

Binning is available.

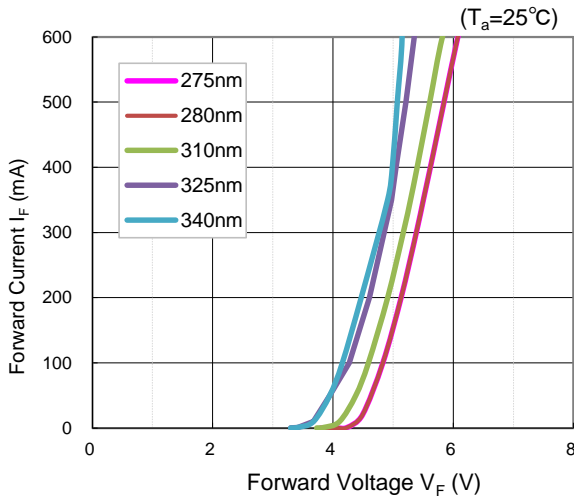
Specification and dimension are subject to change for improvement without notice.

	WARNING
	<ul style="list-style-type: none"> • LEDs emit very strong UV radiation. • Do not look at the LED light with the naked eye or irradiate the skin. UV radiation can harm your eyes and skin. • To prevent UV radiation exposure, wear protective eyewear and protective equipment. • If LEDs are embedded in devices, please indicate warning labels against the UV light LED used. • Keep out of reach of children.

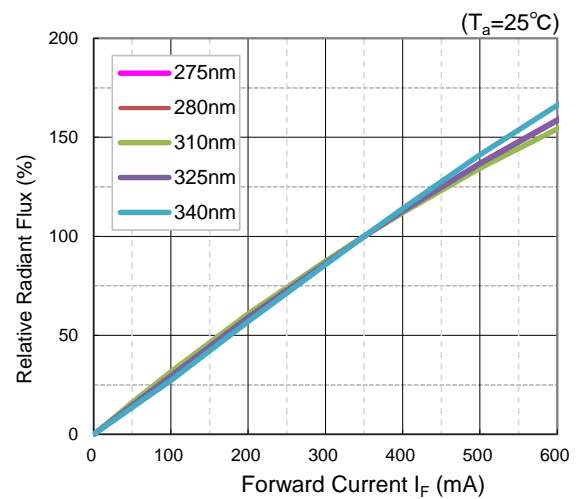
MODEL xxx-FL-01-G01 series

3.5 x 3.5mm Metal Sealed SMD Hemispherical Lens Type

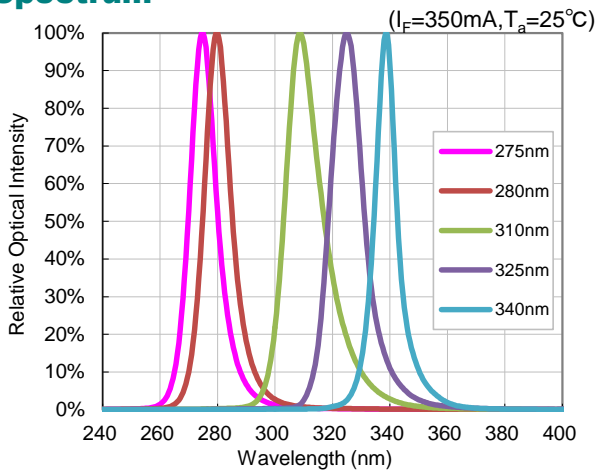
Forward Voltage vs Forward Current



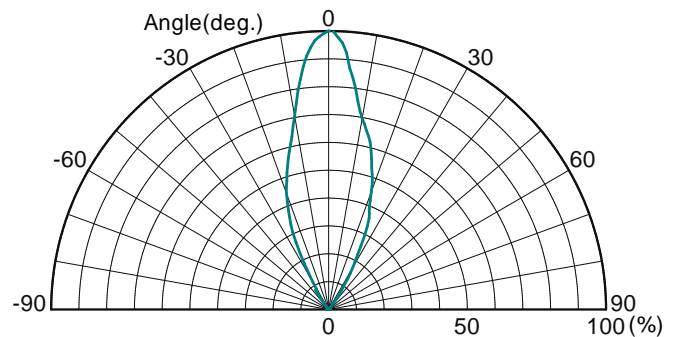
Forward Current vs Radiant Flux



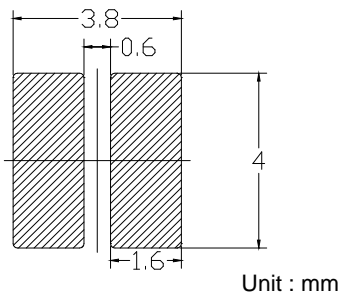
Spectrum



Radiation Pattern



Recommended solder pad



Reflow soldering profile

