

Model xxx-SL-01 series

Bare Die (Flip chip form, AuSn Pad)

Typical Optical-Electrical Characteristics

IF=350mA Ta=25C

Item	Symbol	Unit	275-SL-01			280-SL-01			308-SL-01			325-SL-01			340-SL-01		
			Min	Typ	Max	Min	Typ	Max	Min	Typ	Max	Min	Typ	Max	Min	Typ	Max
Peak Wavelength(*)	λ_p	nm	270	275	280	275	280	285	303	308	313	320	325	330	335	340	345
Radiant Flux(**)	P_o	mW	30	47	60	30	47	60	35	50	70	30	45	60	30	45	60
Full Width at Half Maximum	$\Delta\lambda$	nm	-	11	15	-	11	15	-	14	20	-	12	15	-	10	15
Forward Voltage	V_F	V	-	5.5	-	-	5.5	-	-	5.5	-	-	5.2	-	-	5.0	-

IF=600mA Ta=25C

Item	Symbol	Unit	275-SL-01			280-SL-01			308-SL-01			325-SL-01			340-SL-01		
			Min	Typ	Max	Min	Typ	Max	Min	Typ	Max	Min	Typ	Max	Min	Typ	Max
Peak Wavelength(*)	λ_p	nm	-	(275)	-	-	(280)	-	-	(308)	-	-	(325)	-	-	(340)	-
Radiant Flux(**)	P_o	mW	-	75	-	-	75	-	-	75	-	-	70	-	-	75	-
Full Width at Half Maximum	$\Delta\lambda$	nm	-	(12)	-	-	(12)	-	-	(15)	-	-	(12)	-	-	(10)	-
Forward Voltage	V_F	V	-	6.0	-	-	6.0	-	-	6.0	-	-	5.5	-	-	5.2	-

(*)Peak Wavelength Measurement tolerance is ± 3 nm.

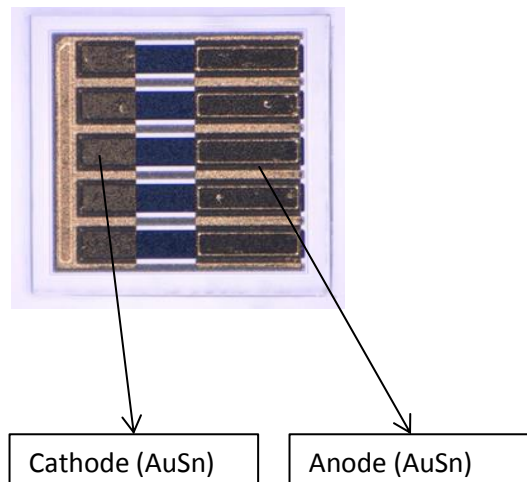
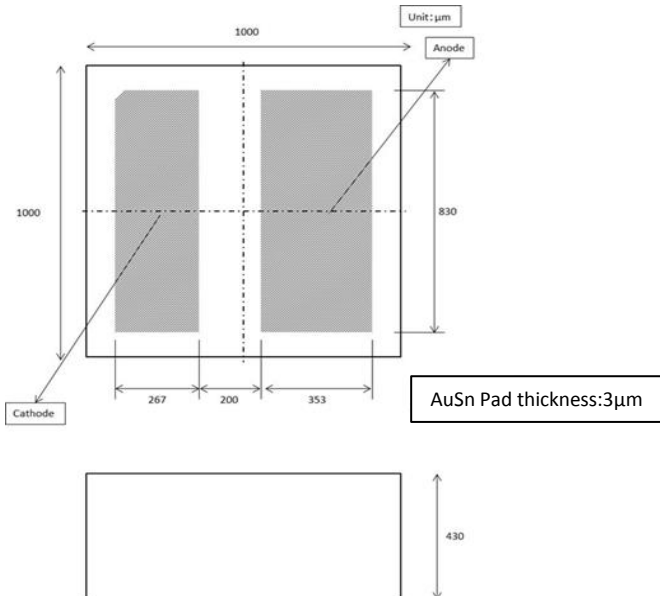
(**)Radiant Flux Measurement tolerance is $\pm 10\%$.

Binning is available.

Specification and dimension are subject to change for improvement without notice.

Product ID, Physical dimensions and Sample photo

xxx-SL-01-C



⚠ WARNING	
	<ul style="list-style-type: none"> LEDs emit very strong UV radiation. Do not look at the LED light with the naked eye or irradiate the skin. UV radiation can harm your eyes and skin. To prevent UV radiation exposure, wear protective eyewear and protective equipment. If LEDs are embedded in devices, please indicate warning labels against the UV light LED used. Keep out of reach of children.

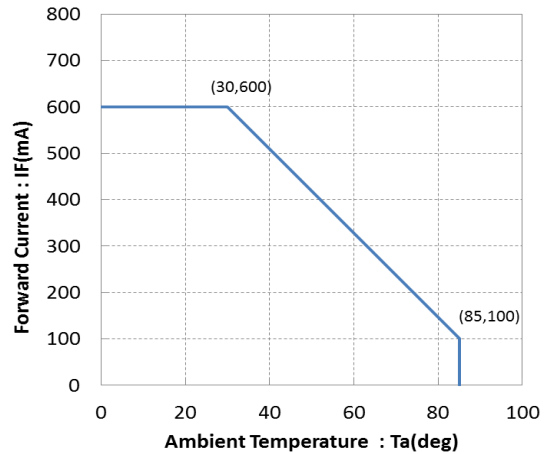
Model xxx-SL-01 series

Bare Die (Flip chip form, AuSn Pad)

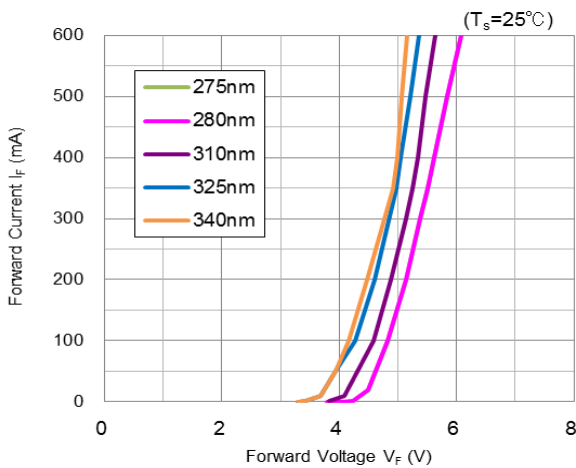
Absolute Maximum Ratings

Item	Symbol	Unit	Value
Forward Current	I_F	mA	600
Junction Temperature	T_J	°C	100
Operating Temperature	T_{OPR}	°C	-30 ~ +85
Storage Temperature	T_{STR}	°C	-40 ~ +85 (No condensation)

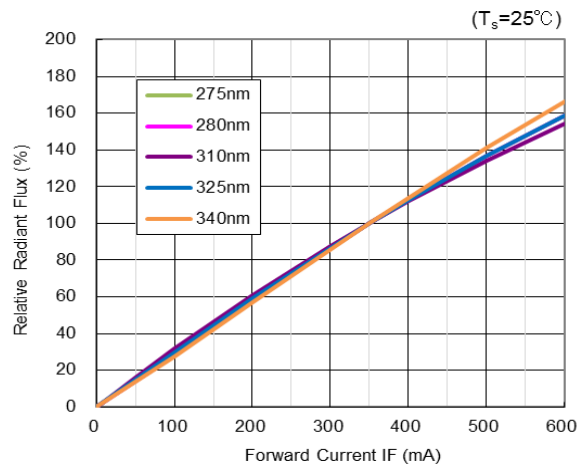
Derating Curve



Forward Voltage vs Forward Current



Forward Current vs Radiant Flux



Spectrum

