

## Model UF1L series

### Bare Die (Flip chip form, Au Pad)

For the main stream applications

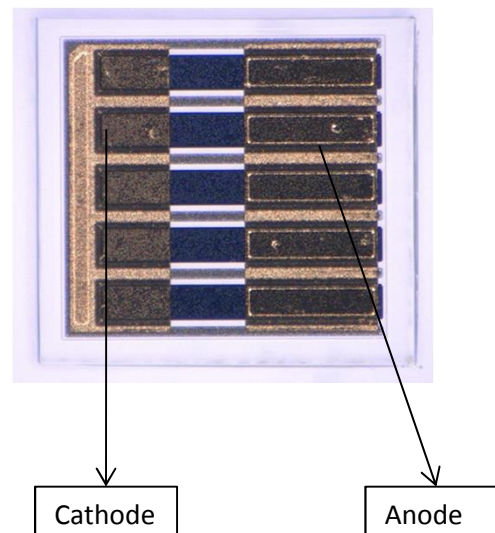
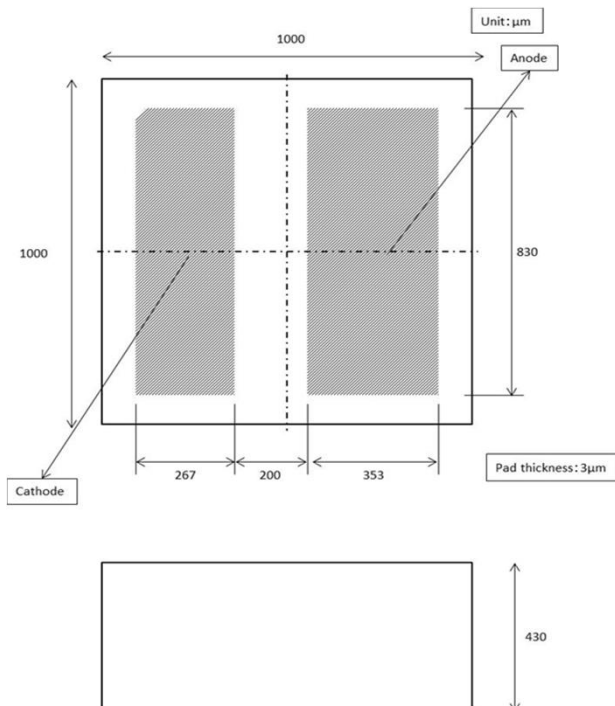
#### Typical Optical-Electrical Characteristics


( $T_a=25^\circ\text{C}$ )

Item	Symbol	Unit	UF1L					
			IF=350mA			IF=600mA		
			Min	Typ	Max	Min	Typ	Max
Peak Wavelength	$\rho$	nm	303	308	313	-	(308)	-
Radiant Flux	$P_o$	mW	-	50	-	-	75	-
Full Width at Half Maximum	$\triangle$	nm	-	14	-	-	(15)	-
Forward Voltage	$V_F$	V	-	5.5	-	-	6.0	-

#### Product ID, Physical dimensions and Sample photo

### UF1LC-00001

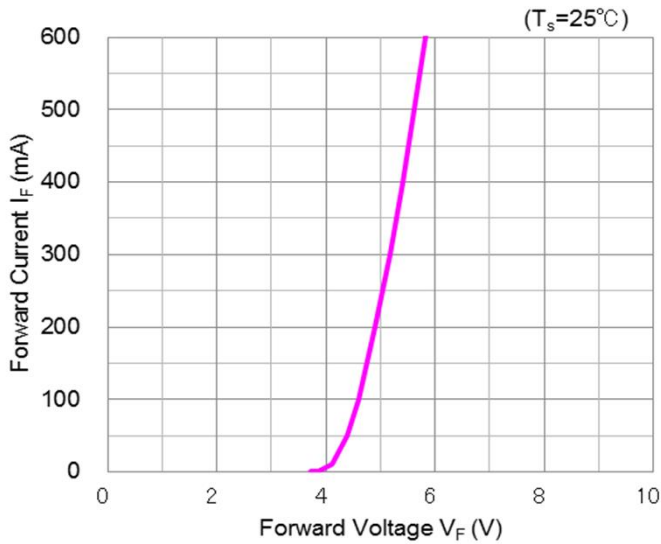


	<b>⚠ WARNING</b>
	<ul style="list-style-type: none"> <li>• LEDs emit very strong UV radiation.</li> <li>• Do not look at the LED light with the naked eye or irradiate the skin. UV radiation can harm your eyes and skin.</li> <li>• To prevent UV radiation exposure, wear protective eyewear and protective equipment.</li> <li>• If LEDs are embedded in devices, please indicate warning labels against the UV light LED used.</li> <li>• Keep out of reach of children.</li> <li>• Specification and dimension are subject to change for improvement without notice.</li> </ul>

## Model UF1L series

### Bare Die (Flip chip form, Au Pad)

#### Forward Voltage vs Forward Current



#### Forward Current vs Radiant Flux

